



TEA MARKET REPORT

SALE NO: **08** of FEBRUARY 21 & 22, 2023

LANKA COMMODITY BROKERS LTD

P.O.Box.2077, Colombo, No: 70 & 72, Maligakanda Road, Colombo 10, Sri Lanka.

Tel:94 11 5222300 Fax: 94 11 5377090

E-mail: lcbl@lcbl-sl.com Website: www.lcbl-sl.com

COMMENTS

Low Tea Crops have been recorded across all three elevations, namely High, Medium and Low in January, 2023 when compared to the corresponding month in 2022. The total Tea Production of 19.1 Mkgs for January, 2023 reflected a decline of 16% over the crop of 22.8 Mkgs achieved in January, 2022. The High Grown elevation's crop of 3.6 Mkgs was a drop of 1.9 Mkgs *year-on-year* (YoY), whilst, Medium elevation crop of 2.4 Mkgs showed a YoY decline of 1.4 Mkgs. The January crop from the Low elevation showed the least decline of 0.4 Mkgs (YoY),

This week's Tea Auction, namely Sale # 08 of 2023 was held on February 21 & 22, 2023 (Tue/Wed), with a weight of 5 mkgs, which was similar to the previous week's quantity. The Low Grown Leafy, Semi Leafy, Tippy & Small Leaf/ Premium Flowery catalogues totaled 2.38 mkgs, while the Main Sale High & Medium segment had 0.52 mkgs. The Ex Estate category had 0.7 mkgs.

The market for teas in the Ex Estate catalogue was irregular. Select Best Western BOP's and BOPF's appreciated up to Rs. 100/- whilst, others were irregular. Below-best BOP's and BOPF's eased Rs. 50/- to 100/-, whilst plainer category teas were mostly firm. Selected Nuwara Eliya BOP's were Rs. 100/- dearer, but, the rest was irregular. There were hardly any Nuwara Eliya BOPF's on offer. Uda Pussellawa BOP's and BOPF's were irregular and lower, while Uva BOP's were mostly firm, and their BOPF's were barely steady. CTC Teas - High Grown PF1's were barely firm, while, Mediums tended dearer at the lower end of the market. Low Grown PF1's lost Rs. 50/- per kg. There were hardly any High Grown BP1's on offer, while, Mediums were irregular. Low Grown sorts were firm. There was fair demand from the Western Markets, while buyers for Japan, China and Taiwan were less active. Russian interest was maintained.

There was fair demand for Low Grown Teas. Select best OP1's were firm while below-best teas eased on last. The better OP's and OPA's were firm whilst below-best varieties were easier. OP's and OPA's at the lower end of the market however, were firm to marginally dearer. The best and below-best BOP1's were lower to last, while poorer types were maintained. Pekoes / PEK1's in general were easier. Well-made, selected FBOP's were easier, while a range of neater, below-best teas held firm. FBOPF1's in general were easier. Selective demand was once again seen from Iran. There was good interest however, from buyers for Saudi Arabia, The UAE and other Middle Eastern countries, and, sustained demand was seen from Russia and the CIS. Türkiye and Syria were less active for Pekoe grades. Libya supported the secondary whole leaf grades, whilst Iraq picked (YoY), up the bottom level teas

This week's auction comprised of 10,013 lots with a total quantity of 4,999,804 kgs.

The catalogue wise breakdown was as follows:-

	<u>Lots</u>	<u>Qty. (Kgs)</u>
Low Grown Leafy	1,739	627,392
Low Grown Semi Leafy	1,516	659,185
Low Grown Tippy	2,047	1,028,044
High & Medium	1,233	523,284
Off Grade/BOP1A	1,899	928,825
Dust	465	428,132
Premium Flowery	407	65,401
Ex-Estate	<u>707</u>	<u>739,541</u>
Total	<u>10,013</u>	<u>4,999,804</u>

In Lighter Vein

Lipstick on the Mirrors

A principal of a small middle-school had a problem with a few of the older girls starting to use lipstick. Though he was a rather stern disciplinarian and a bit of an old fuddy-duddy, he was not primarily concerned with issues of modesty and innocence. Rather, for some reason, when applying it in the bathroom they would press their lips to the mirror and leave lip prints, like so...

Before it got out of hand he thought of a way to stop it. He gathered all the girls together that wore lipstick and told them he wanted to meet with them in the ladies room at 2pm. When they gathered at 2pm, they found the principal and the school janitor waiting for them. The principal explained that it was becoming a problem for the janitor to clean the mirror every night. He said he felt that the ladies did not fully understand just how much of a problem it was, and therefore he wanted them to witness just how hard it was to clean. The janitor then demonstrated. He took a long brush on a handle out of a box. He then dipped the brush in the nearest toilet, moved to the mirror and proceeded to remove the lipstick. That was the last day the girls pressed their lips on the mirror.

LOW GROWN TEAS

LEAFY/SEMI LEAFY

- BOP1** : All round showed an irregular market conditions and lost Rs.40-60/- and more at times.
- OP1** : Select best types maintained last levels, whilst the others were irregularly lower by Rs.30-50/-.
- OP** : Select best types gained Rs.40-60/-, whilst the below best types lost Rs.50-70/-, poorer types were firm on last levels.
- OPA** : Stylish OPA's lost Rs.30-50/-. Below best and secondary types sold firm on last levels. Poorer types were fully firm to dearer.
- PEK/PEK1**: Well made shotty PEKOE/PEKOE1 lost Rs.25-50/-, whilst the others were regular and mostly lower.

Quotations (Rs./Kg)	Best		Below Best		Others	
	<u>This Week</u>	<u>Last Week</u>	<u>This Week</u>	<u>Last Week</u>	<u>This Week</u>	<u>Last Week</u>
BOP1	2100-2850	2500-3400	1300-2100	1600-2500	900-1300	1400-1600
OP1	1600-3550	1700-3550	1200-1600	1100-1700	900-1200	800-1100
OP	1650-2250	1500-2250	1300-1650	1200-1500	900-1300	800-1200
OPA	1800-2300	1850-2400	1400-1800	1500-1850	1000-1400	950-1500
PEK/PEK1	1900-2650	2000-2700	1400-1900	1500-2000	950-1400	1000-1500

TIPPY/SMALL LEAF

- BOP/BOPSP** : A selection of Best BOPs held firm. Balance were easier.
- BOPF/BOPFS** : BOPFs in general were easier.
- FBOP/FBOP1** : Select Best FBOPs were substantially lower. Best too were easier to a lesser extent. Cleaner Below Best together with teas at the lower end sold around last levels. Balance eased. However, the bolder varieties were firm on last levels. FBOP1s, in general firm.
- FBOPF/FBOPF1** : Tippy teas together with cleaner Below Best maintained whilst the balance were irregular. Well made FF1s were easier, whilst few cleaner Below Best sold around last levels, balance declined.
- FBOPFSP/EXSP** : Small varieties were mostly unsalable due to lack of suitable bids. Long varieties gained in price.

Quotations (Rs./Kg)	Best		Below Best		Others	
	<u>This Week</u>	<u>Last Week</u>	<u>This Week</u>	<u>Last Week</u>	<u>This Week</u>	<u>Last Week</u>
BOP/BOPSP	2000-2850	1600-2700	1300-2000	1300-1600	1000-1300	1000-1300
BOPF /BOPFSP	1800-2300	1700-2350	1300-1800	1300-1700	1000-1300	1000-1300
FBOP/FBOP1	1700-2450	1700-2700	1400-1700	1500-1700	1100-1400	1200-1500
FBOPF/FBOPF1	1600-2300	1600-2350	1350-1600	1300-1600	1000-1350	1100-1300
FBOPFSP/EXSP	3500-6550	3000-6650	1200-3500	1800-3000	1400-2000	1300-1800

MEDIUM GROWN LEAFY/SEMI LEAFY TEAS

- FBOP** : Well-made FBOPs' on offer were discounted whilst the below best types too were easier on last levels. Teas at the lower end were irregular and firm at time more.
- FBOPF/FBOPF1** : Teas at the best lost Rs.50-100/- , below best types too were easier on last levels, teas at the lower end were firm to easier.
- PEK/PEK1** : Best teas on offer declined Rs.25-50/- and more towards the close. Teas at the below best declined Rs.50-100/-, poorer sorts tended firm on last levels.

Quotations (Rs./Kg)	Best		Below Best		Others	
	<u>This Week</u>	<u>Last Week</u>	<u>This Week</u>	<u>Last Week</u>	<u>This Week</u>	<u>Last Week</u>
FBOP	1450-2300	1500-2250	1100-1400	1100-1500	900-1100	900-1100
FBOPF/FBOPF1	1350-2050	1400-2250	1000-1350	1000-1400	950-1000	925-1000
PEK/PEK1	1750-2250	1800-2400	1200-1750	1250-1800	1100-1200	1000-1250

HIGH GROWNS TEAS

BOP: Best Westerns - Gained Rs.100/- per kg and more for select invoices, whilst the others were firm. Teas in the Below Best category declined by Rs 50-100/- per k& whilst the Plainer sorts were mostly firm. Nuwara Eliya s - Select invoices gained up to Rs.100/- per kg; whilst the others were irregular. Uda Pussellawa's - Better teas were irregular and easier, whilst the others together with the Uva's were mostly firm.

BOPF: Best Western's- Select invoices gained up to Rs.100/- per kg whilst the others were irregular and generally firm following quality. Teas in the Below Best category were firm and up to Rs.50/- per kg lower, whilst the Plainer sorts were generally firm. Nuwara Eliya's had hardly any offerings. Uda Pussellawa s - Better teas were easier whilst the others were firm to marginally dearer. Uva's were firm and up to Rs.50/- per kg lower.

Quotations (Rs./Kg)	BOP		BOPF	
	<u>This Week</u>	<u>Last Week</u>	<u>This Week</u>	<u>Last Week</u>
Best Westerns	1700-2050	900-1100	1700-1950	1700-1950
Below Best Westerns	1500-1650	925-1000	1550-1650	1550-1650
Plainer Westerns	1300-1480	1000-1250	1400-1480	1340-1500
Nuwara Eliyas	1380-1950	900-1100	1650	1240
Brighter UdaPussellawas	1280-1420	925-1000	1400-1550	1360-1600
Other Uda Pussellawas	1160-1180	1000-1250	1160-1340	1080-1280
Best Uva's	1380-1500	900-1100	1380-1500	1400-1500
Other Uva's	1120-1360	925-1000	1240-1340	1220-1380

MEDIUM GROWN TEAS

BOP : Large Leaf teas were firm and tended dearer, whilst the others were marginally easier.

BOPF : Barely steady.

Quotations (Rs./Kg)	BOP		BOPF	
	<u>This Week</u>	<u>Last Week</u>	<u>This Week</u>	<u>Last Week</u>
Best Westerns	970-2100	1000-2350	980-N/A	920-N/A

CTC TEAS

HIGH GROWN:

BP1 - Hardly any offerings

PF1 - Barely steady.

MEDIUM GROWN:

BP1 - Irregular,

PF1 - Firm and tended dearer at the lower end of the market.

LOW GROWN:

BP1 - Firm.

PF1 - Firm and Rs.50/- per kg easier on average

Quotations (Rs./Kg)	BP1		PF1	
	<u>This Week</u>	<u>Last Week</u>	<u>This Week</u>	<u>Last Week</u>
High	NOT QUOTED	NOT QUOTED	1220-1380	1000-1420
Medium	920-1340	1080-1380	1160-1400	770-1480
Low	850-1460	960-1440	770-2000	820-2050

OFF GRADES

FGS/FGS1 : Select best Liquoring FNGS/FNGS1s' lost Rs.20-30/-; others held firm. Clean Low Grown well-made FNGS1's lost Rs.25/- per kg whilst others little irregular.

BM : Well-made BM's lost Rs.20/-. Best types firm to dearer Rs 10-20/- whilst poorer types firm to dearer Rs.10-20/- per kg.

BOP1A : Select best BOP1A's held firm. Best teas advanced Rs.20-40/- per kg. Poorer types advanced Rs.20-40/- per kg.

QUOTATIONS (Rs./kg)	HIGH		MEDIUM		LOW	
	<u>This Week</u>	<u>Last Week</u>	<u>This Week</u>	<u>Last Week</u>	<u>This Week</u>	<u>Last Week</u>
Good Fannings (Orthodox)	850-1400	850-1420	720-860	720-880	750-890	750-920
Good Fannings (CTC)	600-850	600-850	600-820	600-850	590-820	590-860
Other Fannings (Orthodox)	580-800	580-820	590-820	590-850	580-800	580-820
Other Fannings (CTC)	N/A	N/A	N/A	N/A	N/A	N/A
Good BM's	790-900	780-900	850-900	880-900	850-910	880-910
Other BM's	790-880	780-880	820-900	780-880	820-900	780-880
Best BOP1As	890-970	850-950	950-1100	950-1100	1600-1700	1600-1700
Other BOP1As	800-900	780-900	800-900	780-900	800-975	780-975

DUST

DUST/DUST1 : High Grown liquoring Dust1's maintained last levels, whilst their secondaries were fully firm to dearer. Medium grown teas were irregular and mostly lower. Low grown clean Dust/Dust1s' met with an improved demand and gained Rs.40-60/-.

PD : Most of PDs' met with an irregular market conditions and lost Rs.25-50/-.

QUOTATIONS (Rs./kg)	HIGH		MEDIUM		LOW	
	<u>This Week</u>	<u>Last Week</u>	<u>This Week</u>	<u>Last Week</u>	<u>This Week</u>	<u>Last Week</u>
Good Primary Dust1 (Orthodox)	1550-2050	1400-1850	900-1460	950-1550	950-1730	900-1600
Good Primary PD (CTC)	800-1400	800-1480	700-1460	700-1440	700-1730	700-1800
Secondary Dust	750-1600	750-1600	800-940	800-940	600-980	680-1020

WESTERN MEDIUM

*Hatale	BOP1	1950/-
*Dartry Valley	OP1	1850/-
*Harangalla	OP1	1850/-
Harangalla	OP1	1850/-
*Orange Field	OP/OPA	1800/-
*Harangalla	OP/OPA	1800/-
*Dartry Valley	PEK/PEK1	2250/-
Dartry Valley	PEK/PEK1	2250/-
Nayapane	BOP	2100/-
Windsoforest	BOPSP	1700/-
Loolecomdera	BOPF	1380/-
*Uplands	BOPFSP	1280/-
Harangalla	FBOP/FBOP1	2300/-
Craighead	FBOP/FBOP1	2300/-
Dartry Valley	FBOPF/FBOPF1	2050/-

WESTERN HIGH

Somerset	BOP	2100/-
Somerset	BOP SP	1650/-
Queensberry	BOP SP	1650/-
Great Western	BOPF/BOPFSP	1900/-
St.Andrews	BOP1	2050/-
St.Andrews	FBOP/FBOP1	1700/-
Glenloch	FBOPF/FBOPF1	1650/-
Inverness	OP/OPA	1650/-
Queensberry	OP/OPA	1650/-
St.Andrews	OP/OPA	1650/-
Venture	OP/OPA	1650/-
Glenloch	OP/OPA	1650/-
Dehiwatte Super	OP/OPA	1650/-
Venture	OP1	1900/-
Glenloch	PEK/PEK1	2100/-

NUWARA ELIYA

Mahagastotte	BOP	1950/-
Lover Leap	BOPF/BOPFSP	1650/-
Lovers Leap	FBOP/FBOP1	1800/-
Kenmare	OP/OPA	1320/-
Court Lodge	PEK/PEK1	1700/-

CTC TEAS**HIGH GROWN**

Ulugedara CTC	PF1	1380/-
Dunsinane CTC	BP1	1420/-

MEDIUM GROWN

*New Peacock CTC	PF1	1400/-
Delta CTC	BP1	1340/-
Aultmore CTC	BPS	1060/-

LOW GROWN

Hingalgoda CTC	PF1	2000/-
Cecilayan CTC	BP1	1460/-

UVA MEDIUM

Glen Alpin	BOP1	2050/-
Tinioya	OP1	1900/-
Aruna Passara	OP/OPA	1700/-
Tinioya	OP/OPA	1750/-
High Spring	OP/OPA	1750/-
Tinioya	PEK/PEK1	2150/-
Dickwella	BOP	1600/-
Sarnia Plaiderie	BOPSP	1550/-
Dickwella	BOPF/BOPFSP	1550/-
*Halpewatte Uva	FBOP/FBOP1	1750/-
Telbedde	FBOP/FBOP1	1750/-
Misty Uva	FBOPF/FBOPF1	1700/-
Demodera 'S'	FBOPF/FBOPF1	1700/-

UVA HIGH

Glenanore	BOP1	1800/-
Aislaby	OP1	1800/-
Glenanore	OP/OPA	1700/-
Ranaya	PEK/PEK1	2150/-
Bandaraeliya	BOP	1420/-
Pitarathmalie	BOP	1420/-
Ranaya	BOPSP	1550/-
Badura Eliya	BOPF/BOPFSP	1500/-
Aislaby	FBOP/FBOP1	1750/-
Uvakellie	FBOPF/FBOPF1	1650/-

UDA PUSSELLAWA

Gonapitiya	BOP1	1220/-
Gampaha	OP1	1600/-
Alma	OP/OPA	1600/-
Delmar	OP/OPA	1600/-
Blairmond	PEK/PEK1	2100/-
Luckyland	BOP	1420/-
Kirklees	BOPF/BOPFSP	1550/-
*Delmar	FBOP/FBOP1	1480/-
Alma	FBOPF/FBOPF1	1550/-
Delmar	FBOPF/FBOPF1	1550/-

OFF GRADES

Green Lanka	BP	1550/-
Hingalgoda CTC	PF	1550/-
Wathurawilla	BM	1700/-
Mattakelle	FNGS/FNGS1	1460/-
Garden Leaf	BOP1A	1850/-
*Narangala Super	BOP1A	1800/-
*Chandrika Estate	BOP1A	1800/-
Galatara	BOP1A	1800/-

LOW GROWN LEAFY GRADES

Sithaka	BOP1	2850/-
Lumbini	OP1	3550/-
Pothotuwa	OP1	3550/-
Golden Garden	OP	2550/-
Magedara	OPA	2300/-
Lumbini	PEKOE	2650/-
Hidellena	PEKOE1	2550/-

LOW GROWN TIPPY GRADES

Pothotuwa	BOP	2850/-
Stream Line	BOPSP	2550/-
*Sithaka	BOPF	2300/-
*Makandura	BOPFSP	2300/-
*Mahaliyadda	BOPFSP	2000/-
Sithaka	FBOP	2450/-
Brombil	FBOP1	2200/-
Gunawardana	FBOPF	2300/-
Pothotuwa	FBOPF1	2350/-

PREMIUM FLOWERY

Wikiliya	FBOPFSP	5450/-
Nilrich	FBOPFEXSP	6550/-
Susantha	FBOPFEXSP1	3750/-
Kamarangapitiya	FBOPFEXSP1	3350/-
*KDU Super	FBOPFEXSP1	3250/-

Dust

Mattekelle	DUST/DUST1	2050/-
Hingalgoda CTC	PD	1730/-

COLOMBO AUCTION – WEEKLY GROSS SALE AVERAGES

SALE NO.07 OF 15TH FEBRUARY, 2023

	2023			2022	
	Weekly	Month to Date	Year to Date	Weekly	Year to Date
Uva High Grown	1,231.56	1,211.11	1,237.72	664.64	634.61
Western High Grown	1,500.21	1,495.97	1,484.67	729.21	724.50
High Grown	1,430.31	1,422.35	1,419.10	713.28	699.12
Uva Medium	1,217.04	1,187.27	1,253.38	693.34	658.17
Western Medium	1,186.46	1,172.32	1,221.79	621.88	629.10
Medium Grown	1,194.56	1,176.30	1,230.91	642.14	637.73
Low Grown (Orthodox)	1,546.53	1,529.89	1,574.32	781.65	767.11
Combined L.G. (Orthodox + CTC)	1,513.45	1,484.82	1,545.55	762.37	750.80
Total	1,451.35	1,429.16	1,474.10	731.72	721.15

Private Sale Figures (13.02.2023 - 18.02.2023) - 90,069.00 kgs

Cumulative - 701,382.35 kgs

DETAILS OF TEAS AWAITING SALE

	<u>Sale of 28th Feb/01st Mar.' 23</u>		<u>Sale of 07th /08th Mar. '23</u>	
	<u>Lots</u>	<u>Qty. (Kgs)</u>	<u>Lots</u>	<u>Qty. (Kgs)</u>
Low Grown Leafy	1,678	594,737	1,863	681,950
Low Grown Semi Leafy	1,475	614,928	1,567	696,173
Low Grown Tippy	1,792	861,044	2,077	1,029,750
High & Medium	1,166	479,827	1,302	565,062
Off Grade/BOP1A	1,674	827,091	2,148	1,053,129
Dust	398	361,956	508	452,611
Premium Flowery	358	54,162	276	45,331
Ex-Estate	643	656,721	688	719,147
Total	<u>9,184</u>	<u>4,450,466</u>	<u>10,429</u>	<u>5,243,153</u>

FUTURE CATALOGUES CLOSURE

Sale No.11 of 14th/15th March, 2023

The Main Sale & Ex-Estate Sale catalogues are scheduled to be closed on **23rd February, 2023 at 04.30 p.m.**

Sale No.12 of 21st /22nd March, 2023

The Main Sale & Ex-Estate Sale catalogues are scheduled to be closed on **02nd March 2023 at 04.30 p.m.**

Sale No.13 of 28th /29th March, 2023

The Main Sale & Ex-Estate Sale catalogues are scheduled to be closed on, **09th March 2023 at 04.30 p.m.**

BROKER'S SELLING ORDER

SALE NO. 09

Auction of 28th Feb./01st Mar, 2023

Leafy/Semi Leafy/Tippy/BOP1A/ Premium Flowery

1. Ceylon Tea Brokers PLC
2. Asia Siyaka Commodities PLC
3. John Keells PLC
4. Eastern Brokers PLC
5. **Lanka Commodity Brokers Ltd**
6. Mercantile Produce Brokers (Pvt) Ltd
7. Bartleet Produce Marketing (Pvt) Ltd
8. Forbes & Walker Tea Brokers (Pvt) Ltd

High & Medium/Off Grades/Dust

1. Asia Siyaka Commodities PLC
2. John Keells PLC
3. Eastern Brokers PLC
4. Ceylon Tea Brokers PLC
5. **Lanka Commodity Brokers Ltd**
6. Bartleet Produce Marketing (Pvt) Ltd
7. Forbes & Walker Tea Brokers (Pvt) Ltd
8. Mercantile Produce Brokers (Pvt) Ltd

Ex-Estate

1. Ceylon Tea Brokers PLC
2. **Lanka Commodity Brokers Ltd**
3. John Keells PLC
4. Mercantile Produce Brokers (Pvt) Ltd
5. Asia Siyaka Commodities PLC
6. Bartleet Produce Marketing (Pvt) Ltd
7. Forbes & Walker Tea Brokers (Pvt) Ltd
8. Eastern Brokers PLC

Crop & Weather

For the period of 13th to 19th February, 2023

Western/Nuwara Eliya Regions:

Bright weather and light evening showers were reported in the Western Region, whilst the Nuwara Eliya Region reported bright weather conditions at the beginning of the week and rain towards the latter part of the week.

Uva/ Udapussellawa Region:

Misty mornings and occasional evening showers were reported in the Uva Region throughout the week. The Udapussellawa Region reported sunny mornings at the beginning of the week and cloudy weather conditions with sporadic evening showers towards the latter part of the week. According to the Department of Meteorology, heavy showers in the evenings are expected in the Uva Region in the week ahead.

Low Grown:

Clear mornings and occasional evening showers were reported in the Low Grown Region throughout the week. The Department of Meteorology expects heavy showers in the Ruhuna and Sabaragamuwa regions in the week ahead.

Crop Intake:

The crop intake was maintained in the Western and Nuwara Eliya regions, whilst an increase was reported in the Uva and Udapussellawa regions. The Low Grown Region reported a decline.

WORLD CROP STATISTICS (MKGS)

<i>Country</i>	<i>Month</i>	<i>2022</i>	<i>2023</i>	<i>Difference</i> +/-	<i>To-date</i> 2022	<i>To-date</i> 2023	<i>Difference</i> +/-
SRI LANKA	<i>Jan.</i>	22.86	19.13	-3.73	22.86	19.13	-3.73

<i>Country</i>	<i>Month</i>	<i>2021</i>	<i>2022</i>	<i>Difference</i> +/-	<i>To-date</i> 2021	<i>To-date</i> 2022	<i>Difference</i> +/-
BANGLADESH	<i>Dec.</i>	6.93	7.78	0.85	96.51	93.83	-2.68
KENYA	<i>Nov.</i>	50.70	49.20	-1.50	485.30	478.00	-7.3
NORTH INDIA	<i>Dec.</i>	50.80	48.0	-2.80	1108.00	1110.40	2.40
SOUTH INDIA	<i>Dec.</i>	15.00	14.40	-0.60	235.00	230.10	-4.90
MALAWI	<i>Aug.</i>	2.09	1.99	-0.10	38.40	35.70	-2.7
TANZANIA	<i>June</i>	1.80	1.76	-0.04	16.56	20.37	3.8
UGANDA	<i>July</i>	5.65	2.77	-2.9	45.86	33.32	-12.54

ANNUAL STOCK VERIFICATION – Akbar Brothers Ltd

Please note that **Annual Stock Verification of the above buyer will be held on 27th & 28th February 2023.**

Therefore, all Ex-Estate deliveries will be accepted **only until 25th February 2023.**

No teas should be delivered to their warehouses during the stock verification on 27th & 28th February 2023.

All deliveries will be accepted as usual from 1st March 2023.

OTHER MARKETS

MALAWI MARKET REPORT SALE No. 08 HELD ON 22/02/2023

Less demand continued at generally firm levels where sold for the 5540 packages on offer.

BP1 – Received no support.

PF1 – Held firm where sold with some out lots.

PD were sold 5 USC below valuation with some lines taken out.

PF1SC – were taken out with some invoices under bids.

Secondaries – Few invoices were firm on last where sold with balance neglected on account of low quality.

WEATHER/CROP FOR THE WEEK ENDING 19TH FEBRUARY, 2023

Warm to hot weather conditions were experienced this week with increased rainfall activity in all planting districts, total rainfall averaging 82-151mm in Thyolo and 43 to 75mm in Mulanje.

Crop intakes were generally steady.

TEA BROKERS CENTRAL AFRICA LIMITED

SALE NO.42 OF MONDAY 20th FEBRUARY, 2023

CTC LEAF : 46,967 packages of Current Season teas on offer met with fair demand at lower rates.

BROKENS : A few lines of clean Brokens on offer met with a good demand and were mostly firm on last. All others witnessed a fair demand and prices eased quite considerably. Withdrawals were quite heavy. BLF teas continued to meet with a fairly good demand at around last levels.

FANNINGS : A handful of clean Fannings on offer met with a good demand and were about steady. All other varieties met with less demand and price levels took a sharp decline. Here again withdrawals were quite heavy. BLF teas continued to meet with a fairly good demand at around last levels.

CTC DUST : 10,460 packages of Current Season teas on offer met with fairly good demand. Good liquoring varieties met with some competition and sold at around last levels. Mediums met with good demand but prices were easier by Tk.10/- to Tk.15/- closely following quality. Plain and BLF saw some demand with fair withdrawals. Blenders were quite active with fair interest from the Loose tea buyers.

COMMENTS : Once again offerings comprised of mostly end of season varieties. Both Blenders and Loose tea buyers were a little more active with the latter competing quite actively at the bottom end of the market. As a result, there were a little less withdrawals compared to last although prices dropped substantially following quality.

Dusts sold well.

Quotations - This Week - (In Taka)

Brokens	This Week	Last Week	Fannings	This Week	Last Week	Dust	This Week	Last Week
Large	NQTA	180-200N	Best	225-245N	225-250N	PD	125-219	140-255
Medium	170-190	180-200	Good	185-200	200-215	RD	102-265	111-290
Small	175-200	185-210	Medium	140-170	160-180	D	132-298	100-305
Plain	80-120	100-130	Plain	80-120	100-130	CD	131-294	143-290
BLF	115-150	120-145	BLF	115-150	120-145	BLF	115-172	111-190

COURTESY: NATIONAL BROKERS LTD



SOUTH INDIAN ROUNDUP

FOR THE WEEK ENDING – 18TH FEBRUARY, 2023

KOCHI

CTC LEAF

Demand : Good Demand, All grades sold fully around last levels.

ORTHODOX LEAF

Demand : Fair Demand.

Market : The Whole leaf grades sold steady to dearer levels (particularly high grown) in line with quality. The tippy and the primary broken sold at steady levels with some withdrawals. Secondary broken and Fanning's sold at barely steady levels

Buying Pattern : Middle East and CIS buyers operated.

DUST

Demand : Good Demand

Market : Popular marks and better mediums are sold Irregular and lower by Rs 1 to 2. Medium and plainer shows an easier trend with few withdrawals.

Buying Pattern : Major Blenders operated with some support from packeteers, internal buyers were selective.

COONOR

CTC LEAF

Demand : Strong.

Market : Though the market witnessed an improved general demand in comparison to last week that was not reflected in the price realization. Market tended easier by Rs. 2/- to Rs. 3/- and sometimes more following quality. It has also witnessed a fair withdrawal on the Better Mediums.

The overall sale percentage is 89% at an average of Rs. 115.43.

Buying Pattern : Major Blenders continued their support on the Mediums and on the Common teas. Internal has been lending fairly good support with other Regional Packeteers. Export has been rather selective with only JFK being fairly active on the Fannings.

ORTH LEAF

Demand : Fairly strong

Market : Market had opened on an irregularly easier note on the Broken and on the Fannings, which suffered some withdrawals. The Whole Leaf grades and some selected Tippy Broken were rather trading at fully firm to dearer levels.

The overall sale percentage is 86% at an average of Rs. 132.85.

Buying Pattern : Strong Export enquiry was forthcoming in which Shah Brothers was seen active with equally good Internal support.

CTC DUST

Demand . Fairly strong.

Market : Yet again a stronger sentiment paved the way for a better price realization. The Best and Better liquoring types have traded strongly with the prices moving up further. The Mediums however were trading at barely steady to firm levels.
The overall sale percentage is 86% at an average of Rs. 125.26.

Buying Pattern : Fairly stronger enquiry was witnessed from the Major Blenders along with other Regional Packeteers. Internal has been lending fairly good support whilst the Export rendered fair support with Girnar and New Tea were seen active. As usual Anjaneya Enterprises continued their strong support on the Brighter liquoring sorts.

ORTH DUST

Demand : Quite strong

Market : The Market continues to be bullish with prices moving up on the Primary dust grades by Rs. 3/- to Rs. 5/- and up-to Rs. 10/- sometimes. The Secondary's and Tertiary's were trading rather irregularly and mostly on dearer levels.

The overall sale percentage is 97% at an average of Rs. 111.10

Buying Pattern : Fairly good Internal enquiry was forthcoming with Exporters lending equal support. Anjaneya Enterprises was seen active on the Primary and Flavoury dusts.

COIMBATORE

CTC LEAF

Demand : Fair general demand.

Market : Better medium / popular sorts suffered heavy withdrawals. Medium teas were barely steady to lower by Re.1/- to Rs.2/- with few withdrawals. However blacker and grainy BOPF's were dearer by Re.1/- to Rs.2/-. Plainer teas bolder grades were lower by Rs.2/- with few withdrawals. BOPF's were firm to dearer by Rs.2/-.

Buying Pattern : Blenders and packeteers were active on medium and plainer teas. Others selective.

ORTH LEAF

Demand : Fair demand.

Market : Whole leaf barely steady. Broken steady with some withdrawals.

Buying Pattern : Exporters and internal were active.

CTC DUST

Demand : Fair general demand.

Market : Better medium / popular sorts were lower by Rs.2/- with some withdrawals. Medium teas were fully firm to dearer by Re.1/- sometimes more. Plainer teas were dearer by Rs.2/- to Rs.3/- on bolder grades. Finer grades were steady.

Buying Pattern : Blenders and packeteers were active. Internal and exporters were selective.

ORTH DUST

Demand : Good demand.

Market : Firm to dearer by Rs.2/-.

Buying Pattern : Exporters were active.

Source: Paramount Tea Marketing (SI) Private Limited

22nd February, 2023

- /ra.



LANKA COMMODITY BROKERS LTD

SRI LANKA TEA PRODUCTION- JANUARY, 2023

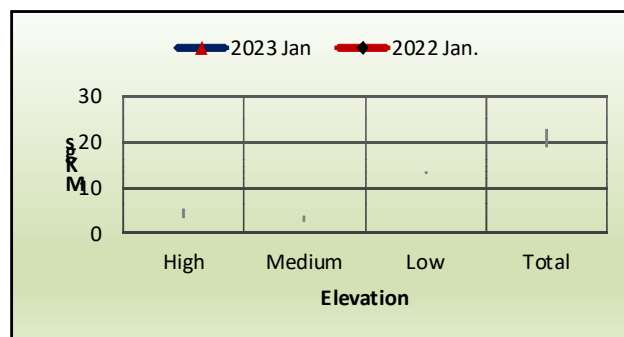


Sri Lanka has recorded a disappointing production figure of only 19.1 Mkgs during January 2023, which is a decline of 3.7 Mkgs when compared to January 2022. The largest drop in production when comparing January 2023 vs 2022, is seen from the High Grown elevation with 1.8 Mkgs followed by the Medium elevation with a decline of 1.4 Mkgs.

Given below are more comprehensive details relating to tea production.

Sri Lanka Tea Production-January 2023 vs. 2022 (In Kgs)

	January-2023	January-2022	Difference (+/-)	%
High	3,602,233	5,491,108	(1,888,875)	(34)
Medium	2,465,070	3,891,205	(1,426,135)	(37)
Low	13,070,219	13,486,162	(415,943)	(3)
Total	19,137,522	22,868,475	(3,730,953)	(16)



During the period January 2023 /2022, the larger crop harvests have been from the following regions.

Crop Harvest Data - Top 20 Districts January 2023 Vs 2022				
	DISTRICT	TEA CROP 2023 (KGS)	TEA CROP 2022(KGS)	(+/-)
1	Galle	3,214,304.0	2,854,024.0	360,280.0
2	Ratnapura	3,104,897.0	3,591,180.0	(486,283.0)
3	Kelani Valley	1,371,460.0	647,698.0	723,762.0
4	Kalutara	1,293,503.0	1,407,417.0	(113,914.0)
5	Gampola/Nawalapitiya/Dolosbage	1,117,694.0	1,694,120.0	(576,426.0)
6	Matara	980,026.0	1,096,449.0	(116,423.0)
7	Deniyaya	891,507.0	994,386.0	(102,879.0)
8	Morawaka	495,366.0	457,002.0	38,364.0
9	Nanuoya/Lindula/Talawakelle	485,767.0	875,170.0	(389,403.0)
10	Balangoda/Rakwana	451,635.0	667,971.0	(216,336.0)
11	Hatton /Dickoya	437,305.0	765,092.0	(327,787.0)
12	Demodara/Haliella/ Badulla	390,269.0	551,290.0	(161,021.0)
13	Kegalle	388,625.0	541,624.0	(152,999.0)
14	Kadugannawa	343,727.0	457,993.0	(114,266.0)
15	Agarapathana	336,510.0	503,228.0	(166,718.0)
16	Bogawantalawa	333,316.0	572,909.0	(239,593.0)
17	Upcot/Maskeliya	303,709.0	502,016.0	(198,307.0)
18	Pussellawa/Hewaheta	290,028.0	517,754.0	(227,726.0)
19	Balangoda	277,007.0	386,695.0	(109,688.0)
20	Pundaluoya	275,287.0	394,293.0	(119,006.0)

February 17, 2023

JRA: sr

INTERNATIONAL TEA NEWS

UK tea firms face sex abuse claims in Kenya: BBC



LONDON - Two British tea manufacturers on Monday faced accusations of sexual abuse on tea plantations in Kenya, according to an undercover investigation by the BBC.

Journalists spoke to 100 women working on plantations producing tea for world-famous brands, for a joint BBC Africa Eye/Panorama television documentary.

"More than 70 women on Kenyan tea farms, owned for years by two British companies, told the BBC they had been sexually abused by their supervisors," the broadcaster said on its website.

The documentary focused on a Kenyan plantation that at the time was owned by British household goods giant Unilever, and another one that is owned by the tea group James Finlay & Co.

The BBC spoke with "dozens" of victims who said they had no choice but to give in to managers' sexual demands or lose their jobs.

One was reportedly infected with HIV by her supervisor, while others fell pregnant.

One supervisor is accused of raping a 14-year-old girl who was living on site at one of the plantations.

Secret filming, meanwhile, showed that local bosses had sought to pressure an undercover BBC reporter for sex.

Unilever told AFP it was "deeply shocked by the allegations in the BBC programme".

The group added in a statement that it had "worked hard for many years to address the very serious issues of sexual and gender-based violence against women in the tea industry".

"This included improving the gender balance of team leaders, upgrading the grievance handling process and strengthening awareness-raising and training."

Unilever added that it was "very disappointed that the measures put in place to make it easier to report, detect and investigate abuse failed to detect and address the issues highlighted by the BBC".

Ms Nathalie Roos, chief executive of Lipton Teas and Infusions, now owned by a private equity group, added that the company was "shocked and dismayed" by the allegations.

"We immediately suspended the managers at the centre of the allegations and launched a full independent investigation," Ms Roos said in a statement sent to AFP.

"We will take the most stringent action if this inquiry, which is still ongoing, finds any evidence of wrongdoing.

"As a woman and a new CEO of the tea market leader, I am taking a determined approach to making a meaningful difference for people across the industry, including women's safety, which is particularly close to my heart."

James Finlay & Co added that it found the allegations "deeply shocking" and had suspended two individuals named in the documentary. It has also launched an independent probe.

"There is no place for sexual abuse or harassment anywhere in our business, so this evidence of sexual exploitation at James Finlay Kenya is deeply shocking," said Finlays Group managing director James Woodrow.

In 2022, Unilever completed the sale of its global tea business, including the brands Lipton and PG Tips, to CVC Capital Partners in a deal worth 4.5 billion euros (\$6.42 billion). It has since been rebranded Lipton Teas and Infusions.

China creates lucrative market for Kenyan tea

Some Chinese drink five litres of tea a day, live to 86 years on average

In Summary

- More than 20 per cent of the tea consumed in the world comes from Kenya. China consumes most of what it produces.
- Such is the demand that Kenya is planning to more than double factories making orthodox tea from 11 to 26

Demand for a taste of Kenyan tea is on the rise in China and other parts of the world.

Thanks to the lucrative global market, farmers are now venturing into growing of orthodox tea besides the traditional black tea.

Globally, tea is the second-most consumed beverage after water, followed by coffee, orange juice and beer and soft drinks, such as sodas, wine and vodka.

Kenya is the third-largest producer of tea in the world after China and India, while Sri Lanka is fourth. China is the largest producer as it was first discovered there and is a cultural crop.

Kenya Tea Development Agency sales general manager Francis Muthamia said there has been increased production of orthodox teas.

Orthodox tea refers to loose leaf tea produced using traditional (orthodox) methods, which involves plucking, withering, rolling, oxidation/fermentation and drying.

He attributed this to the high demand for orthodox teas not only in China but in the Middle East, Continental Europe and the Commonwealth of Independent State countries like Russia, Armenia, Kazakhstan, Kyrgyzstan and Tajikistan.

"We have 11 factories and all of them are operating full capacity. We have a plan to roll out another 15 factories in the next one and half years," Muthamia said.




What China is doing to help Kenya tea farmers

Tea Board of Kenya



Building the capacity of farmers to increase orthodox production by:

- 
Offering trainings on orthodox tea manufacturing skills
- 
Grants for construction of more orthodox lines
- 
Providing of market intelligence

STAR ILLUSTRATED

WWW.THE-STAR.CO.KE

LINK TO LONG LIFE

Tea Board of Kenya technical officer James Marete confirmed that there has been increased demand for orthodox tea due to a lucrative global market.

He said factories are increasing the capacity to produce more orthodox teas to reduce over-reliance on CTC teas.

“Traditionally, Kenya has been a black tea-producing country. But now the world is turning to Kenya as production of orthodox tea has increased,” he said.

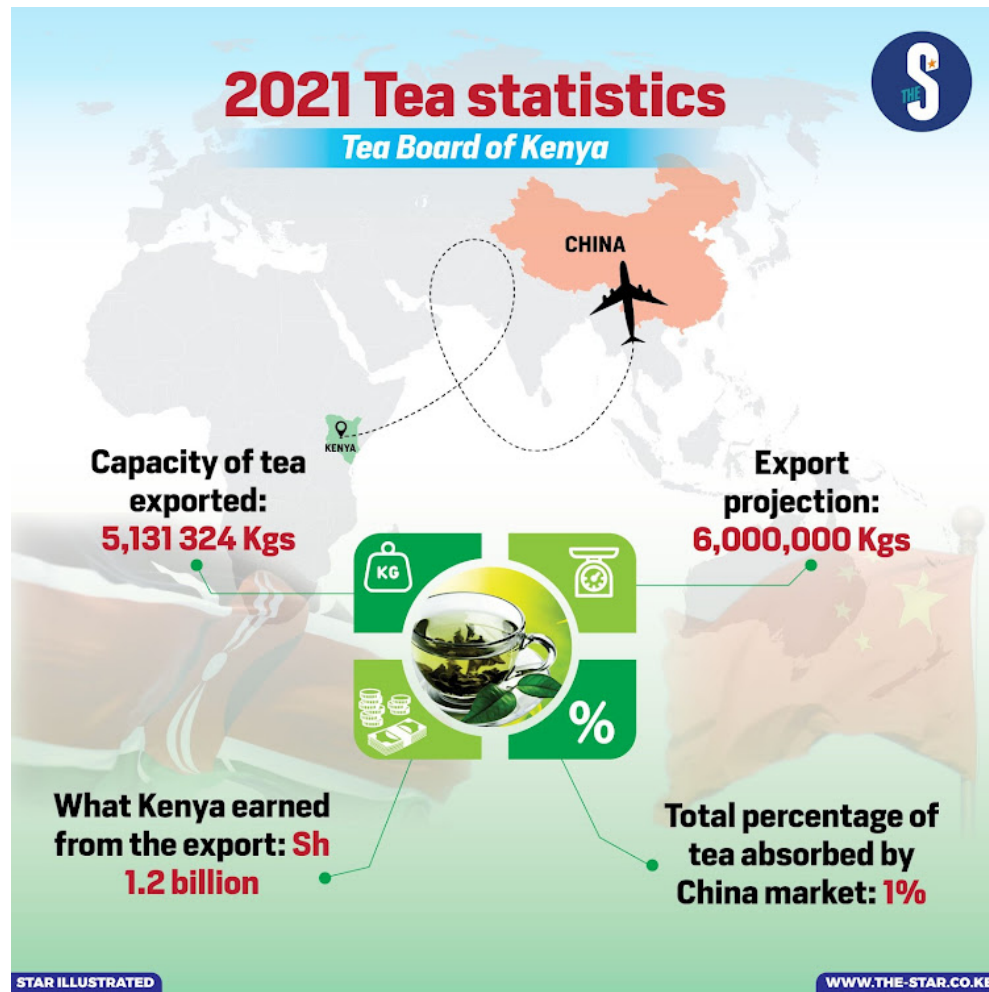
“Buyers are flocking to Kenya in search of the orthodox tea, hence many factories are now factoring into adding another processing line that can make that type of tea. It is something that is now ongoing.”

There are six classes of tea: black tea, green tea, purple tea, yellow tea, oolong tea and puer tea. Kenya predominantly produces black CTC tea (almost 99 per cent black tea).

Marete said Kenya consumes less than seven per cent and exports the rest. More than 20 per cent of the tea consumed in the world comes from Kenya. China consumes most of what it produces.

“I think Kenyans do not consume much tea because they do not understand tea and what it can do to them,” he said.

He said there is a province in China where the average life expectancy is 86 years, and when research was done there, they realized that the daily consumption of tea per person was at least five litres.



MASSIVE EXPORTS

The high demand and growing thirst for black and purple tea from Kenya saw the country export about five million kilogrammes of tea valued at Sh7 billion in 2019.

The United Nations Comtrade database on international trade shows that in 2021, China imported tea from Kenya valued at US\$7.95 million.

Tea is medicinal and it is important for health. According to the Tea Research Institute, if you consume more tea, you will be healthier.

He said it also helps to speed up the metabolism in our bodies and to burn fats, so it used to maintain weight by avoiding accumulation of fats in our bodies.

Tea also has an anti-ageing property, especially purple tea, one of the current specialty varieties, and thus people are advised to drink it every day.

Purple tea has similar properties to red wine and blueberry fruit, and the more you take, the better your health.



Bernard Ruto, a farmer from Kericho, grows orthodox tea and has been contracted by a tea cottage industry in Kericho to produce the tea.

"Quality is everything. The best quality can be obtained if we have enough fertilizer in farms and when we pluck them in rounds," he said.

"I pluck my tea three times a month and I have seen high productivity compared to the ones for black CTC variety. Managing orthodox is one of the easiest because of round plucking, which ensures best quality."

He said the price is higher; he sells a kilo of his orthodox tea at Sh28, which is high.

"I sell 2,000 tea bushes, which give 500kg per month. I am planning to add and have 2.5 acres under orthodox tea, which has 5,600 bushes," the farmer said.

MORE VALUED

Tea Research Institute director Dr Samson Kamunya said in 2021, TRI raised five new tea cuts for green, white, yellow and black orthodox teas.

He said these teas fetch more than Sh500-Sh600 per kg, compared to black CTC tea cities, which are fetching at an average of around Sh300 to Sh350 per kg.

"We are glad that we are contributing towards the advancement of the tea industry. We also have purple tea, which is slowly being adopted by the industry and market. Farmers are likely to get as much as Sh1,000 to Sh1,100 per kg of purple tea, and those who have already adopted it like our cottage tea processors are already reaping the benefits," he said.

The institute of Kenya Agricultural and Livestock Research Organization (KALRO) is mandated to research tea.

According to 2021 tea statistics as per Tea Board of Kenya, the current tea production in Kenya for the CTC tea is 533 million kg and 4.2 million kg for Orthodox teas.

China market absorbs about one percent of this and about 5.1 million kg is exported in China with a value of Sh1.2 billion.

The board says there are various initiatives being carried out in the country to support farmers and help increase production, especially of the orthodox teas, to fully exploit the Chinese market.

Some of the initiatives include building the capacity of farmers to increase orthodox production by offering training on orthodox tea manufacturing skills, providing grants for construction of more orthodox lines and providing market intelligence.