



*To all our Valued Clients,  
We wish you a Merry Christmas &  
a Prosperous New Year 2019!*

*-All Directors & Staff-*



ප්‍රීතිමත් නත්තලක් සහ  
සුභ නව වසරක් වේවා.....!

2019



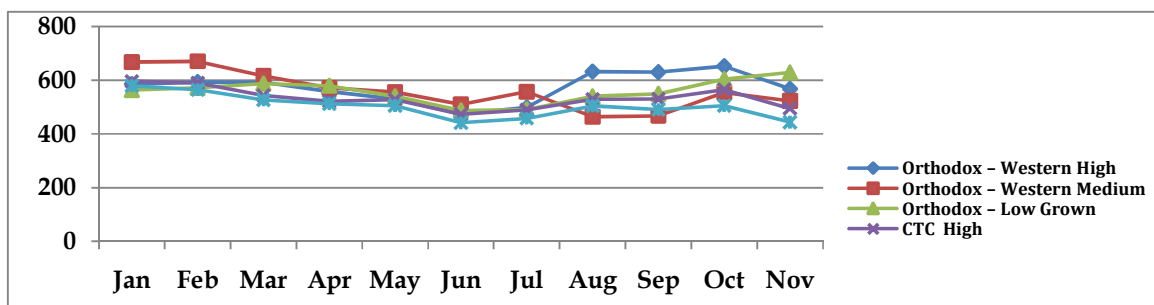
## **SALE NO.50 OF 17<sup>TH</sup> & 18<sup>TH</sup> DECEMBER, 2018**

### **COMMENTS**

The 50<sup>th</sup> and final auction for the current year was concluded this week under good demand conditions for most categories of tea. The Low Grown Leafy quantity on offer amounted to 1.8 Mkgs whilst the Low Grown Tippy Teas totaled 1.1 Mkgs. High Grown Ex-Estate teas amounted to approximately 1.0 Mkgs. The quality of Low Grown was maintained when compared to the previous auctions, and the selection of well made leafy BOP1's /OP1's as well as OP's/OPA's were sold at fully firm price levels. The PEK market which has been gaining considerably over the last several weeks showed a sign of easing off but FBOP's/FBOPF1's continued to sell at firm to dearer levels. Most Middle Eastern markets i.e. Saudi Arabia, Kuwait, Syria, Libya, Iran and the U.A.E were active whilst Turkey also lent good demand at slightly easier levels.

There was fair demand in the Ex-Estate catalogue. Only the best available Westerns were able to secure firm to dearer prices with buyers closely following quality whilst below best and plainer sorts eased Rs.20-30/- per kg. Apart from some selected teas, quality was rather uninteresting and demand from some large markets also was lower due to the festive season holidays enjoyed globally.

The performance of the monthly Colombo Tea Auctions are depicted in the chart given below from which one could see the dramatic fall in prices of Low Grown particularly during the period April to July this year which seriously affected the cash flow of the producer sector. There has however been some recovery from August onwards and the upward spiral has continued month by month right up to the end of November which is largely due to the increased buying by the Middle Eastern sector together with the winter buying for Russia which took place up to October.



| Elevation     | Jan    | Feb    | Mar    | Apr    | May    | Jun    | Jul    | Aug    | Sep    | Oct    | Nov    |
|---------------|--------|--------|--------|--------|--------|--------|--------|--------|--------|--------|--------|
| Orthodox - WH | 585.61 | 593.39 | 591.79 | 557.76 | 530.41 | 474.18 | 498.74 | 632.12 | 629.87 | 652.18 | 567.81 |
| Orthodox - WM | 667.63 | 670.77 | 616.88 | 571.33 | 555.88 | 509.86 | 557.27 | 463.88 | 467.89 | 554.24 | 523.85 |
| Orthodox - LG | 563.43 | 572.16 | 587.68 | 579.96 | 540.19 | 487.74 | 491.33 | 540.02 | 549.61 | 604.49 | 628.82 |
| CTC High      | 595.9  | 589.8  | 543.2  | 521.7  | 528.04 | 473.21 | 490.39 | 529.15 | 530.47 | 565.42 | 494.74 |
| CTC Medium    | 579.73 | 565.03 | 527.2  | 512.32 | 505.69 | 442.03 | 457.75 | 504.29 | 491.32 | 505.64 | 443.9  |

The Trade in Colombo and the Producer Sector now look forward to welcoming the New Year following the seasonal holiday period with stronger market conditions as present indications are that the inventories of some of our major importers are running short of Ceylon Tea. Whilst sustained demand from Europe, U.S.A, South Africa, Japan, Hong Kong, China, the Middle East and Turkey could be expected from the 01<sup>st</sup> sale of January, 2019 itself, the full effect of Russian buying is expected to kick in only after the 02<sup>nd</sup> auction in January, in view of the Russian Orthodox Church celebrating Christmas on January 07<sup>th</sup> in keeping with the old 'Julian' calendar for religious celebration days.

This week's auction comprised of **11,690** lots with a total quantity of **6,687,438** Kgs.

The catalogue-wise breakdown was as follows:-

|                 | Lot   | Qty. (Kgs) |
|-----------------|-------|------------|
| Low Grown Leafy | 4,019 | 1,821,864  |
| Low Grown Tippy | 2,122 | 1,132,286  |
| High & Medium   | 1,368 | 705,377    |
| Off Grade/BOP1A | 2,364 | 1,385,440  |
| Dust            | 579   | 585,972    |
| Premium Flowery | 367   | 68,849     |
| Ex-Estate       | 871   | 987,650    |

### **In lighter vein**

#### **Worldwide Survey**

A worldwide survey was conducted by the UN. The only question asked was: "Would you please give your honest opinion about solutions to the food shortage in the rest of the world?" The survey was a huge failure. In Africa they didn't know what "food" meant. In Eastern Europe they didn't know what "honest" meant. In Western Europe they didn't know what "shortage" meant. In China they didn't know what "opinion" meant. In the Middle East they didn't know what "solution" meant. In South America they didn't know what "please" meant. And in the USA they didn't know

## **LOW GROWNS - LEAFY**

**BOP1** : Select best teas tended irregular; balance however maintained. Teas at the lower end too fully firm on last week levels.

**OP1** : Teas in the select best category were firm to irregularly lower; balance maintained. Stalky invoices too declined.

**OP** : A few teas in the best category were maintained; balance declined by Rs.10-20/- per kg. Lower end teas too irregularly lower.

**OPA** : Select best invoices were irregularly firm; balance declined Rs.10-20/- per kg. Poor sorts too declined Rs.20/- and at times were difficult of sale.

**PEK/PEK1**: Well made shotty invoices were firm to lower by Rs.10-15/- per kg; balance too declined by Rs.10-20/-per kg. Bolder varieties on average declined Rs.,20/-per kg. Teas at the lower end too Eased.

### **Quotations (Rs./Kg)**

|                 | <b>Best</b>             |                         | <b>Below Best</b>       |                         | <b>Others</b>           |                         |
|-----------------|-------------------------|-------------------------|-------------------------|-------------------------|-------------------------|-------------------------|
|                 | <b><u>This Week</u></b> | <b><u>Last Week</u></b> | <b><u>This Week</u></b> | <b><u>Last Week</u></b> | <b><u>This Week</u></b> | <b><u>Last Week</u></b> |
| <b>BOP1</b>     | 880-1100                | 880-1050                | 670-720                 | 670-720                 | 575-625                 | 570-630                 |
| <b>OP1</b>      | 900-1400                | 900-1500                | 670-720                 | 650-720                 | 380-410                 | 400-430                 |
| <b>OP</b>       | 620-780                 | 650-920                 | 520-560                 | 500-560                 | 360-390                 | 360-410                 |
| <b>OPA</b>      | 610-840                 | 610-890                 | 500-550                 | 500-550                 | 325-375                 | 350-400                 |
| <b>PEK/PEK1</b> | 830-1010                | 850-990                 | 700-730                 | 700-740                 | 450-500                 | 470-510                 |

## **TIPPY/SMALL LEAF**

**BOP/BOPSP:** Few select best BOP's maintained; others were irregularly lower. Best sold around last; balance eased.

**BOPF/BOPFSP:** In general were lower.

**FBOP/FBOP1** : Few select best FBOP's firm to dearer. Balance together with best sold around last levels. Below best and cleaner teas at the lower end appreciated; others were firm. FBOP1's in general firm to dearer.

**FBOPF/FBOPF1:** Very tippy teas together with best were irregularly lower. Few teas in the below best and cleaner teas at the lower end maintained; others were easier. Few select best FF1's were firm to dearer; others together with best were fully firm. Cleaner below best too were firm on last; others together with teas at the lower end eased.

**FBOPFSP/ EXSP:** Very tippy teas together with best sold around last week levels whilst the lower end prices were fully firm to dearer.

### **Quotations (Rs./Kg)**

|              | <b>Best</b>             |                         | <b>Below Best</b>       |                         | <b>Others</b>           |                         |
|--------------|-------------------------|-------------------------|-------------------------|-------------------------|-------------------------|-------------------------|
|              | <b><u>This Week</u></b> | <b><u>Last Week</u></b> | <b><u>This Week</u></b> | <b><u>Last Week</u></b> | <b><u>This Week</u></b> | <b><u>Last Week</u></b> |
| BOP/BOPSP    | 750-880                 | 750-880                 | 550-650                 | 550-650                 | 380-420                 | 400-430                 |
| BOPF /BOPFSP | 750-800                 | 750-825                 | 550-650                 | 550-650                 | 380-420                 | 400-440                 |
| FBOP/FBOP1   | 780-1010                | 780-1000                | 650-720                 | 650-700                 | 600-650                 | 630-660                 |
| FBOPF/FBOPF1 | 750-890                 | 750-820                 | 550-650                 | 550-650                 | 550-600                 | 530-580                 |
| FBOPFSP/EXSP | 750-2050                | 750-1600                | 650-780                 | 650-750                 | 650-750                 | 650-700                 |

**MEDIUM GROWN LEAFY/SEMI LEAFY TEAS**

**FBOP** : Well made FBOP's maintained last levels whilst the others were irregular and mostly lower.

**FBOPF/FBOPF1**: Showed a marked decline and lost Rs.40-60/-.

**PEK/PEK1** : Select best types were Rs. 10-20/- lower whilst the others were Rs. 30-40/- lower.

|                     | <b>Best</b>      |                  | <b>Below Best</b> |                  | <b>Others</b>    |                  |
|---------------------|------------------|------------------|-------------------|------------------|------------------|------------------|
|                     | <u>This Week</u> | <u>Last Week</u> | <u>This Week</u>  | <u>Last Week</u> | <u>This Week</u> | <u>Last Week</u> |
| <b>FBOP</b>         | 800-960          | 820-960          | 700-800           | 720-820          | 500-700          | 500-720          |
| <b>FBOPF/FBOPF1</b> | 780-870          | 800-1000         | 700-780           | 720-800          | 500-700          | 500-720          |
| <b>PEK/PEK1</b>     | 840-970          | 775-980          | 670-840           | 675-775          | 500-670          | 500-675          |

**HIGH GROWNS**

**BOP**: Best Westerns declined Rs.20-30/-per kg and more following quality whilst others were lower by a similar margin. In the below best category, a selection of brighter teas were irregularly dearer, others were firm and tended easier. Plainer clean leaf teas were Rs.10-20/-per kg dearer whilst the poorer sorts were firm and lower by a similar margin. Nuwara Eliya's were neglected. Udupussellawa's were irregular and sold around last week's levels. Uva's declined Rs.20/-per kg and more.

**BOPF**: Best Westerns –small selection of teas were firm and Rs.10-20/-per kg dearer following special inquiry, others together with the teas in the below best category declined Rs.20-30/-per kg and more. At the lower end, brighter were firm and Rs.10-20/-per kg dearer whilst plainer sorts were lower by a similar margin. Nuwara Eliya's declined Rs.20/-per kg and more at times. Udupussellawa's were irregular following quality. Uva's were Rs.10-20/-per kg lower mostly following quality.

| <u>Quotations (Rs./Kg)</u> | <b>BOP</b>       |                  | <b>BOPF</b>      |                  |
|----------------------------|------------------|------------------|------------------|------------------|
|                            | <u>This Week</u> | <u>Last Week</u> | <u>This Week</u> | <u>Last Week</u> |
| Best Westerns              | 650-750          | 660-800          | 650-750          | 670-760          |
| Below Best Westerns        | 620-640          | 610-650          | 610-640          | 620-660          |
| Plainer Westerns           | 530-580          | 540-600          | 510-600          | 520-610          |
| Nuwara Eliyas              | 480-500          | 520-670          | 470-560          | 470-610          |
| Other Uda Pussellawas      | 430-440          | 460-490          | 430-440          | 450-470          |
| Best Uva's                 | 550-600          | 550-650          | 530-600          | 570-660          |
| Other Uva's                | 500-520          | 510-540          | 500-520          | 520-550          |

**MEDIUM GROWN TEAS**

**BOP**: Mostly firm.

**BOPF**: Sold around last week's levels.

| <u>Quotations (Rs./Kg)</u> | <b>BOP</b>       |                  | <b>BOPF</b>      |                  |
|----------------------------|------------------|------------------|------------------|------------------|
|                            | <u>This Week</u> | <u>Last Week</u> | <u>This Week</u> | <u>Last Week</u> |
| Best Westerns              | 540-850          | 540-850          | 480-570          | 490-580          |

**CTC**

**PF1**: High Grown PF1's irregular and tended easier. Medium Growns declined Rs.20/-per kg whilst Low Grown sold around last week's levels.

**BP1**: High Grown BP1's were gained much less demand. Medium Grown declined Rs.10-20/-per kg and more and Low Growns select invoices were dearer, others were irregular.

**Quotations (Rs./Kg)**

| <u>Quotations (Rs./Kg)</u> | <b>PF1</b>       |                  | <b>BP1</b>       |                  |
|----------------------------|------------------|------------------|------------------|------------------|
|                            | <u>This Week</u> | <u>Last Week</u> | <u>This Week</u> | <u>Last Week</u> |
| High                       | 430-570          | 440-560          | 500              | 510-550          |
| Medium                     | 370-610          | 420-610          | 430-500          | 430-560          |
| Low                        | 420-720          | 400-840          | 250-600          | 420-600          |

**OFF GRADES**

Best liquoring FNGS/FNGS1's firm to lower by Rs.5-10/- whilst the poorer sorts tended irregular. Best BP's were firm. Well made BM's held firm. Poorer types were irregularly lower by Rs.20/-. Select best BOP1A's were firm whilst poorer types lost Rs.20-30/-.

| <b><u>QUOTATIONS (Rs/kg)</u></b> | <b><u>HIGH</u></b>      |                         | <b><u>MEDIUM</u></b>    |                         | <b><u>LOW</u></b>       |                         |
|----------------------------------|-------------------------|-------------------------|-------------------------|-------------------------|-------------------------|-------------------------|
| <b><u>Sale Date</u></b>          | <b><u>This Week</u></b> | <b><u>Last Week</u></b> | <b><u>This Week</u></b> | <b><u>Last Week</u></b> | <b><u>This Week</u></b> | <b><u>Last Week</u></b> |
| Good Fannings (Orthodox)         | 330-510                 | 340-530                 | 320-370                 | 320-380                 | 310-390                 | 320-400                 |
| Good Fannings (CTC)              | 310-330                 | 310-340                 | 310-330                 | 310-340                 | 310-330                 | 310-330                 |
| Other Fannings (Orthodox)        | 300-320                 | 300-320                 | 300-320                 | 300-320                 | 300-320                 | 300-320                 |
| Other Fannings (CTC)             | N/A                     | N/A                     | N/A                     | N/A                     | N/A                     | N/A                     |
| Good BM's                        | 350-380                 | 370-400                 | 350-400                 | 370-420                 | 440-510                 | 450-510                 |
| Other BM's                       | 320-340                 | 320-340                 | 320-340                 | 320-340                 | 320-340                 | 320-340                 |
| Best BOP1As                      | 400-410                 | 410-430                 | 460-490                 | 500-510                 | 500-520                 | 500-530                 |
| Other BOP1As                     | 290-310                 | 300-320                 | 290-310                 | 300-320                 | 290-330                 | 310-340                 |

**DUST**

Best liquoring High Grown D/D1's appreciated by Rs.50-60/- per kg whilst others were fully firm to dearer. Secondary and poorer types advanced by Rs.10-20/- per kg. Select best Low Grown D/D1's eased by Rs.30-40/- whilst the poorer sorts were fully firm to easier. CTC PD's firm on last levels and at times more.

| <b><u>QUOTATIONS (Rs/kg)</u></b> | <b><u>HIGH</u></b>      |                         | <b><u>MEDIUM</u></b>    |                         | <b><u>LOW</u></b>       |                         |
|----------------------------------|-------------------------|-------------------------|-------------------------|-------------------------|-------------------------|-------------------------|
| <b><u>Sale Date</u></b>          | <b><u>This Week</u></b> | <b><u>Last Week</u></b> | <b><u>This Week</u></b> | <b><u>Last Week</u></b> | <b><u>This Week</u></b> | <b><u>Last Week</u></b> |
| Good Primary Dust 1(Orthodox)    | 680-940                 | 600-830                 | 560-610                 | 550-630                 | 480-550                 | 480-620                 |
| Good Primary PD (CTC)            | 500-620                 | 460-520                 | 490-600                 | 470-580                 | 480-650                 | 480-650                 |
| Other Primary Dust (Orthodox)    | 300-330                 | 300-330                 | 350-370                 | 350-370                 | 400-450                 | 400-450                 |
| Other Primary Dust (CTC)         | N/A                     | N/A                     | 300-340                 | 300-340                 | 290-340                 | 290-340                 |
| Secondary Dust                   | 320-370                 | 320-370                 | 300-340                 | 300-340                 | 290-330                 | 290-330                 |
| Poorer Dust                      | 300-350                 | 300-350                 | 240-290                 | 240-290                 | 290-350                 | 290-350                 |

**World Crop Statistics (MKGS)**

| <b>Country</b>            | <b>Month</b>       | <b>2017</b>         | <b>2018</b>         | <b>Difference +/-</b> | <b>To-date 2017</b> | <b>To-date 2018</b> | <b>Difference +/-</b> |
|---------------------------|--------------------|---------------------|---------------------|-----------------------|---------------------|---------------------|-----------------------|
| <b><i>SRI LANKA</i></b>   | <b><i>Oct.</i></b> | <b><i>25.7</i></b>  | <b><i>23.8</i></b>  | <b><i>-1.90</i></b>   | <b><i>258.8</i></b> | <b><i>247.1</i></b> | <b><i>-11.7</i></b>   |
| <b><i>BANGLADESH</i></b>  | <b><i>Oct.</i></b> | <b><i>9.0</i></b>   | <b><i>10.8</i></b>  | <b><i>1.80</i></b>    | <b><i>59.3</i></b>  | <b><i>58.5</i></b>  | <b><i>-0.8</i></b>    |
| <b><i>KENYA</i></b>       | <b><i>Oct.</i></b> | <b><i>43.4</i></b>  | <b><i>49.3</i></b>  | <b><i>5.86</i></b>    | <b><i>347.0</i></b> | <b><i>395.5</i></b> | <b><i>48.6</i></b>    |
| <b><i>MALAWI</i></b>      | <b><i>Oct.</i></b> | <b><i>1.5</i></b>   | <b><i>2.2</i></b>   | <b><i>0.7</i></b>     | <b><i>37.8</i></b>  | <b><i>42.8</i></b>  | <b><i>5.0</i></b>     |
| <b><i>NORTH INDIA</i></b> | <b><i>Oct.</i></b> | <b><i>162.0</i></b> | <b><i>150.5</i></b> | <b><i>-11.5</i></b>   | <b><i>929.9</i></b> | <b><i>930.0</i></b> | <b><i>0.10</i></b>    |
| <b><i>SOUTH INDIA</i></b> | <b><i>Oct.</i></b> | <b><i>21.2</i></b>  | <b><i>25.9</i></b>  | <b><i>4.7</i></b>     | <b><i>197.3</i></b> | <b><i>187.6</i></b> | <b><i>-9.70</i></b>   |
| <b><i>UGANDA</i></b>      | <b><i>Apr</i></b>  | <b><i>5.1</i></b>   | <b><i>1.50</i></b>  | <b><i>-3.6</i></b>    | <b><i>14.70</i></b> | <b><i>6.6</i></b>   | <b><i>-8.10</i></b>   |

“International Tea Committee Bulletin of Statistics”

Cont'd.... (P5)

## THIS WEEK'S TOP PRICES

|                              |                |               |                              |                  |              |                                      |                  |               |
|------------------------------|----------------|---------------|------------------------------|------------------|--------------|--------------------------------------|------------------|---------------|
| <b><u>WESTERN MEDIUM</u></b> |                |               | <b><u>UVA MEDIUM</u></b>     |                  |              | <b><u>LOW GROWN LEAFY GRADES</u></b> |                  |               |
| Craighead                    | BOP            | 850/-         | Demodara 'S'                 | BOP              | 720/-        | Peak View Super                      | BOP1             | 1100/-        |
| Doombagastalawa              | BOPSP          | 680/-         | <b>*Halpewatte Uva</b>       | <b>BOP SP</b>    | <b>720/-</b> | New Vithanakande                     | BOP1             | 1010/-        |
| Cooroondoowatte              | BOPF / BOPF SP | 680/-         | Halpewatte Uva               | BOPF/BOPFSP      | 580/-        | <b>*Sithaka</b>                      | <b>BOP1</b>      | <b>1000/-</b> |
| Craighead                    | BOP1           | 1100/-        | Adawatte                     | BOP1             | 880/-        | Gunawardena                          | OP1              | 1400/-        |
| Craighead                    | FBOP/FBOP1     | 960/-         | Shawlands                    | FBOP /FBOP1      | 810/-        | Mulathiyana Hills                    | OP1              | 1400/-        |
| Doombagastalawa              | FBOP/FBOP1     | 960/-         | Adawatte                     | FBOPF / FBOPF1   | 760/-        | Mulathiyana Hills                    | OP +++           | 1100/-        |
| Craighead                    | FBOPF /FBOPF1  | 870/-         | Rathkelle Uva                | OP/OPA           | 740/-        | <b>*Nawalakanda Super</b>            | <b>OPA</b>       | <b>850/-</b>  |
| Craighead                    | OP/OPA         | 700/-         | Adawatte                     | OP1              | 890/-        | Liyonta                              | PEKOE            | 1010/-        |
| <b>*Harangalla</b>           | <b>OP1</b>     | <b>1000/-</b> | Pinnawella                   | PEK / PEK1       | 870/-        | New Vithanakande                     | PEKOE            | 1010/-        |
| Craighead                    | PEK/PEK1       | 970/-         |                              |                  |              | Matuwagala Super                     | PEKOE1           | 990/-         |
| <b><u>WESTERN HIGH</u></b>   |                |               | <b><u>UVA HIGH</u></b>       |                  |              | Suduwelipothahena                    | PEKOE1           | 990/-         |
| Dessford                     | BOP            | 750/-         | Pita Ratmalie                | BOP              | 600/-        | Kuttapitiya Super                    | PEKOE1           | 990/-         |
| Fordyce                      | BOPSP          | 680/-         | Spring Valley                | BOP SP           | 680/-        | <b><u>LOW GROWN TIPPY GRADES</u></b> |                  |               |
| Bearwell                     | BOPSP          | 680/-         | Bandaraeliya                 | BOPF/BOPFSP      | 600/-        | Kiruwana ganga                       | BOP              | 880/-         |
| Glentilt                     | BOPF / BOPF SP | 750/-         | Oodoowerre                   | BOP1             | 800/-        | Sithaka                              | BOP              | 870/-         |
| Adisham                      | BOPF / BOPF SP | 750/-         | Uvakellie                    | FBOP/ FBOP1      | 750/-        | <b>*Ihalapanapitiya</b>              | <b>BOPSP</b>     | <b>830/-</b>  |
| Inverness                    | FBOP/ FBOP1    | 820/-         | Craig                        | OP1              | 770/-        | Cecilayan                            | BOPSP            | 830/-         |
| Inverness                    | BOP1           | 900/-         | Battawatte                   | OP/OPA           | 670/-        | Pothotuwa                            | BOPF             | 800/-         |
| Inverness                    | FBOPF/FBOPF1   | 960/-         | Craig                        | PEK/PEK1         | 830/-        | Mulathiyana Hills                    | BOPFSP           | 800/-         |
| Inverness                    | OP/OPA         | 800/-         |                              |                  |              | <b>*Sithaka</b>                      | <b>FBOP</b>      | <b>1010/-</b> |
| Queensberry                  | OP1            | 860/-         | <b><u>UDA PUSSELLAWA</u></b> |                  |              | Ceyenta                              | FBOP1            | 850/-         |
| Weddemulla                   | PEK/PEK1       | 830/-         | Blairlmond                   | BOP              | 560/-        | Wathurawila                          | FBOPF            | 890/-         |
| <b><u>NUWARA ELIYA</u></b>   |                |               | <b>*Alma</b>                 | <b>BOPSP</b>     | <b>640/-</b> | <b>*L.Kottawa</b>                    | <b>FBOPF</b>     | <b>830/-</b>  |
| Court Lodge                  | BOP            | 500/-         | Mool Oya                     | BOPF/BOPFSP      | 570/-        | Liverpool Sup                        | FBOPF1           | 830/-         |
| Mahagastotte                 | BOPF/BOPFSP    | 560/-         | <b>*Alma</b>                 | <b>BOP1</b>      | <b>590/-</b> | <b><u>PREMIUM FLOWERY</u></b>        |                  |               |
| Lovers Leap                  | BOPF/BOPFSP    | 560/-         | Alma                         | FBOP/ FBOP1      | 710/-        | Sunrise                              | FBOPFSP          | 2050/-        |
| Lovers Leap                  | FBOP/ FBOP1    | 880/-         | Gampaha                      | FBOP/ FBOP1      | 710/-        | <b>*New Galagawa</b>                 | <b>FBOPFEXSP</b> | <b>1850/-</b> |
| Lovers Leap                  | PEK / PEK1     | 900/-         | Alma                         | FBOPF/FBOPF1     | 720/-        | Etambagahawila                       | FBOPFEXSP1       | 1100/-        |
|                              |                |               | Gampaha                      | OP1              | 700/-        | Suduwelipothahena                    | FBOPFEXSP1       | 1100/-        |
|                              |                |               | Gampaha                      | OP/OPA           | 600/-        |                                      |                  |               |
|                              |                |               | <b>*Alma</b>                 | <b>PEK /PEK1</b> | <b>840/-</b> |                                      |                  |               |
| <b><u>CTC TEAS</u></b>       |                |               | <b><u>OFF GRADES</u></b>     |                  |              | <b><u>DUST</u></b>                   |                  |               |
| <b><u>HIGH GROWN</u></b>     |                |               | <b>*Kothmale Hills</b>       | <b>BM</b>        | <b>580/-</b> | <b>High Grown</b>                    |                  |               |
| Dunsinane CTC                | PF1            | 590/-         | <b>*Chandrika Estate</b>     | <b>BM</b>        | <b>580/-</b> | Wattegodde                           | DUST1            | 940/-         |
| Mt. Vernon                   | BP1            | 500/-         | <b>*L.Okanda</b>             | <b>BM</b>        | <b>550/-</b> | Dunsinane                            | PD               | 620           |
| Dunsinane CTC                | BPS            | 520/-         | <b>*Narangala Sup</b>        | <b>BP</b>        | <b>680/-</b> | <b><u>Med Grown</u></b>              |                  |               |
| <b><u>MEDIUM GROWN</u></b>   |                |               | <b>*Dartry</b>               | <b>BP</b>        | <b>640/-</b> | Delta CTC                            | PDUST            | 600/-         |
| Carolina                     | PF1            | 610/-         | Wanarajah                    | FNGS/FNGS1       | 580/-        | Delta CTC                            | DUST1            | 610/-         |
| <b>*Carolina</b>             | <b>BP1</b>     | <b>500/-</b>  | Hingalgoda CTC               | PFGS             | 620/-        | <b><u>Low Grown</u></b>              |                  |               |
| <b><u>LOW GROWN</u></b>      |                |               |                              |                  |              | Cecilayan CTC                        | DUST1            | 550/-         |
| Hingalgoda CTC               | PF1            | 720/-         |                              |                  |              | Cecilayan CTC                        | PD               | 650/-         |
| Cecilayan CTC                | BP1            | 690/-         |                              |                  |              |                                      |                  |               |

\* Sold by Lanka Commodity Brokers Ltd

+++ All Time Record Price

++ Equal All Time Record Price

**COLOMBO AUCTION - GROSS SALE AVERAGES****SALE NO.49 OF 12<sup>TH</sup> DECEMBER, 2018**

|                               | 2018          |                |                | 2017          |                |
|-------------------------------|---------------|----------------|----------------|---------------|----------------|
|                               | <u>Weekly</u> | <u>Month</u>   | <u>Year</u>    | <u>Weekly</u> | <u>Year</u>    |
|                               |               | <u>To-date</u> | <u>To-date</u> |               | <u>To-date</u> |
| Uva High Grown                | 488.59        | 495.96         | 526.76         | 592.01        | 571.12         |
| Western High Grown            | 588.46        | 583.81         | 588.12         | 667.14        | 616.25         |
| High Grown                    | 560.67        | 558.72         | 571.00         | 644.64        | 602.89         |
| Uva Medium                    | 531.67        | 531.44         | 524.63         | 559.43        | 576.20         |
| Western Medium                | 495.95        | 497.51         | 513.46         | 552.00        | 554.84         |
| Medium Grown                  | 505.79        | 506.17         | 516.39         | 554.20        | 561.03         |
| Low Grown (Orthodox)          | 602.53        | 604.43         | 608.12         | 637.03        | 643.09         |
| Combined L. G. (Orthodox+CTC) | 594.13        | 594.12         | 601.56         | 632.98        | 637.79         |
| <b>Total</b>                  | <b>572.19</b> | <b>572.09</b>  | <b>582.17</b>  | <b>622.68</b> | <b>619.11</b>  |

**DETAILS OF TEAS AWAITING SALES**

|                 | <u>Sale of 02<sup>nd</sup> Jan.' 2019</u> |                         | <u>Sale of 08<sup>th</sup> / 09<sup>th</sup> Jan.' 2019</u> |                         |
|-----------------|---|-------------------------|---|-------------------------|
|                 | <u>Lot</u>                                | <u>Qty. (Kgs)</u>       | <u>Lot</u>  | <u>Qty. (Kgs)</u>       |
| Low Grown Leafy | 2,662                                     | 1,129,588               | 4,520   | 2,061,629               |
| Low Grown Tippy | 1,286                                     | 648,880                 | 2,227   | 1,175,573               |
| High & Medium   | 836                                       | 440,155                 | 1,225   | 638,448                 |
| Off Grade/BOP1A | 1,573                                     | 862,495                 | 2,563   | 1,398,867               |
| Dust            | 307                                       | 298,430                 | 522   | 520,157                 |
| Premium Flowery | 131                                       | 25,262                  | 292   | 55,743                  |
| Ex-Estate       | 690                                       | 776,953                 | 605   | 693,007                 |
| <b>Total</b>    | <b><u>7,485</u></b>                       | <b><u>4,181,763</u></b> | <b><u>11,954</u></b>  | <b><u>6,543,424</u></b> |

|  |   |                  |
|--|---|------------------|
| Weekly Private Sale Figures (From 10/12/2018 – 15/12/2018) | - | 92,852 Kgs       |
| Cumulative   | - | 4,452,125.60 Kgs |

**CROP & WEATHER****For the period 10 – 16 December 2018**

Both Western and Nuwara Eliya regions reported bright weather throughout the week. The Department of Meteorology predicts misty mornings in the week ahead. Dry weather was experienced in both Uva and Udupussellawa regions in the past week. Mainly, fair and cold weather will prevail in the days to come according to the Department of Meteorology. Low Growns both Ruhuna and Sabaragamuwa regions reported bright weather throughout the week.

**Crop Intake:** Western and Nuwara Eliya regions show an increase in the crop intake, whilst Uva, Udupussellawa, Ruhuna and Sabaragamuwa regions maintained

**HOLIDAY NOTICE****Our Head-Office will be closed for business on the following days:-**

- ❖ **Monday, December 24, 2018** - Christmas Eve /A section of the Office will however operate with a skeleton staff to handle Buyers prompt and DO's.
- ❖ **Tuesday, December 25, 2018** - Christmas Day
- ❖ **Wednesday 26<sup>th</sup> December 2018** - Boxing Day/ A section of the Office will however operate with a skeleton staff to handle Sellers Prompt Payments.
- ❖ **Thursday, December 27 / Friday, December 28 2018** - Special Holidays
- ❖ **Tuesday 01<sup>st</sup> January, 2019** -New Year's Day

**Tea Sample Room/ Stores:**

- ❖ **Tuesday, December 25, 2018** - Christmas Day
- ❖ **Wednesday, 26<sup>th</sup> 2018** - Boxing Day

**Tea Sample Room/ Stores:**

- ❖ **Thursday, December 27 / Friday, December 28 2018** will be kept open for business.
- ❖ **Tuesday 01<sup>st</sup> January 2019** – Sample Room will remain open for business until 12.30 p.m whilst our Stores will remain open for business full day.

**OTHER MARKETS****MOMBASA & JAKARTA TEA AUCTION MARKET REPORTS**

Not available at the time of printing

Cont'd... (P7)

## CATALOGUES

### Sale No. 02 of 08<sup>th</sup> & 09<sup>th</sup> January, 2019.

The Main Sale catalogue closed on 14<sup>th</sup> December 2018 at 04.30 p.m. and the Ex-Estate catalogue closed on 13<sup>th</sup> December, 2018 at 03.00 p.m.

### Sale No. 03 of 14<sup>th</sup> & 15<sup>th</sup> January, 2019.

The Main Sale catalogue is scheduled to be closed on 21<sup>st</sup> December 2018 at 04.30 p.m. and the Ex-Estate catalogue is scheduled to be closed on 20<sup>th</sup> December, 2018 at 03.00 p.m. but sale will be closed before the scheduled date when the number of lots is reached.

### Sale No. 04 of 22<sup>nd</sup> & 23<sup>rd</sup> January, 2019.

The Main Sale & Ex-Estate Sale catalogues are scheduled to be closed on 03<sup>rd</sup> January, 2019 at 04.30 p.m. but sale will be closed before the scheduled date when the number of lots is reached.

## BROKER'S ORDER- SALE NO.01

### Auction of 02<sup>nd</sup> January, 2019 - Main Sale

#### Leafy/Tippy/BOP1A/ Premium

1. Mercantile Produce Brokers (Pvt) Ltd
2. **Lanka Commodity Brokers Ltd**
3. Eastern Brokers (Pvt) Ltd
4. John Keells PLC
5. Asia Siyaka Commodities PLC
6. Ceylon Tea Brokers PLC
7. Forbes & Walker Tea Brokers (Pvt) Ltd
8. Bartleet Produce Brokers (Pvt) Ltd

#### High & Medium/Off Grades/Dust

1. John Keells PLC
2. Eastern Brokers (Pvt) Ltd
3. Forbes & Walker Tea Brokers (Pvt) Ltd
4. Mercantile Produce Brokers (Pvt) Ltd
5. **Lanka Commodity Brokers Ltd**
6. Asia Siyaka Commodities PLC
7. Bartleet Produce Brokers (Pvt) Ltd
8. Ceylon Tea Brokers PLC

### Auction of 02<sup>nd</sup> January, 2019 - Ex-Estate

1. Asia Siyaka Commodities PLC
2. John Keells PLC
3. Mercantile Produce Brokers (Pvt) Ltd
4. Ceylon Tea Brokers PLC
5. **Lanka Commodity Brokers Ltd**
6. Bartleet Produce Brokers (Pvt) Ltd
7. Eastern Brokers (Pvt) Ltd
8. Forbes & Walker Tea Brokers (Pvt) Ltd

## LCBL APPROXIMATE SELLING TIME

### Wednesday 02<sup>nd</sup> January, 2019

|                 |              |               |              |
|-----------------|--------------|---------------|--------------|
| Low Grown Tippy | : 09.00 a.m. | High & Medium | : 12.15 p.m. |
| Low Grown Leafy | : 09.10 a.m. | Dust          | : 03.15 p.m. |
| Ex-Estate       | : 09.30 a.m. | Off Grade     | : 04.45 p.m. |
| Premium Flowery | : 09.45 a.m. | BOP1A         | : 05.45 p.m. |

## INTERNATIONAL TEA NEWS

### **Tea to Be Dumped in Harbor for 245th Anniversary of Boston Tea Party**

**Organizers are expecting thousands of spectators at the annual event, which will shut down streets Sunday night in Boston**

Sunday is the anniversary of colonists protesting taxation without representation and throwing British tea into Boston Harbor. The incident was considered a pivotal event that led to the American Revolution. Tea will once again be thrown into Boston Harbor to mark the 245th anniversary of the Boston Tea Party. Sunday is the anniversary of the protest during which colonists protesting taxation without representation threw British tea into Boston Harbor in what is considered a pivotal event that led to the American Revolution. The Old South Meeting House and the Boston Tea Party Ships and Museum are organizing the reenactment. More than 40 crates of loose tea were sent in from across the country to be thrown into the harbor as part of the event. Organizers are expecting thousands of spectators at the annual event, which will shut down streets Sunday night in Boston. Shawn Ford, executive director for the Boston Tea Party Ships and Museum, said it's important to mark the anniversary because it was the "single most important event that led to the American Revolution."

"Simply put, if the Tea Party didn't happen, we could be British today," he said. "The citizens of Boston stood up and were willing to risk their lives, families, homes and fortunes based on this idea that men of this country should be free from taxation without representation." He said the destruction of tea in Boston "changed the world."



**SOUTH INDIAN ROUNDUP FOR THE WEEK ENDING 15<sup>TH</sup> DECEMBER, 2018**

**KOCHI**

**CTC LEAF**

**Demand:** Fair demand. Market tending barely steady for the Best broken. Fannings ruled at fully firm levels. Internal and Upcountry buyers lent fair support. Exporters lent useful support for plainer fannings.

**LEAF-ORTHODOX:**

**Demand:** Fair demand.

**Market:** Market ruled at fully firm to occasionally dearer levels for the well-made whole leaf and smaller broken, particularly for the best Nilgiri. However, Medium Broken and Fannings were selling at barely steady levels. Plainer sorts witnessed less demand and suffered withdrawals.

**Buying Pattern:** CIS/Middle East exporters were active. Upcountry buyers lent support on whole leaf grades.

**DUST**

**Demand:** Fair Demand.

**Market:** Best liquoring popular finer grades were selling at easier by Rs.2 to 3/-. Bolder grades ruled at barely steady levels. Better mediums and Plainer bolder sorts were selling at barely steady levels.

**Buying Pattern:** Major blender AVT and KSCSC were active on the best mediums with fair support from regional packeters. Domestic buyers were fairly active in their purchases. Exporters were active on their purchase.

**COONOOR**

**CTC LEAF**

**Demand:** Good

**Market:** Market generally was lower by Rs. 2/- to Rs. 5/- overall and Rs. 3/- at an average to sale no. 49 at Rs. 95/.

**Buying Pattern:** Good enquiry from the Major Blender and other Internal buyers. Exporters were fairly active.

**ORTH LEAF**

**Demand:** Good

**Market:** Market had seen a better enquiry this week as the sale percentage had surged ahead with 80% when comparison with 56% of sale 49. Overall the prices for the Broken were mostly steady to irregularly dearer. The BOPF's and some of the popular marks have gained in prices which have seen the overall prices up by Rs. 5/-.

**Buying Pattern:** Strong Export enquiry with Consolidated Tea being fairly active. Internal buyers were seen very selective.

**CTC DUST**

**Demand:** Good

**Market:** Market was generally an easier trend with the Bolder dusts and the finer dust grades selling at lower levels or rather being outlised. However the RD's have had a better enquiry and sold at fully firm levels.

**Buying Pattern:** Fairly good participation from all quarters of the buyers. Indcoserve was seen less active.

**ORTH DUST**

**Demand:** Good

**Market:** Generally lower by Rs. 2/- to Rs. 4/- overall with an average price drop of Rs. 3/- when compared to last.

**Buying Pattern:** Fairly good export operation with the Internal being selective.

**COIMBATORE**

**CTC LEAF**

**Demand:** Less demand.

**Market:** Better medium smaller broken and BOPF were lower by Rs.4/- with heavy withdrawals. Medium and plainer teas were suffered heavy withdrawals.

**ORTH LEAF** Fair demand. All round lower by Rs.3/- to Rs.4/-.

**CTC DUST**

**Demand:** Fair demand.

**Market:** Better liquoring and popular sorts were lower by Rs.3/- to Rs.4/- with some withdrawals. Mediums and plainer teas were lower by Rs.2/- with heavy withdrawals.

**ORTH DUST** Less demand. Lower by Rs.3/- to Rs.4/- with heavy withdrawals.

*Source: Paramount Tea Marketing (SI) Private Limited.*

**December 18, 2018**

ss.